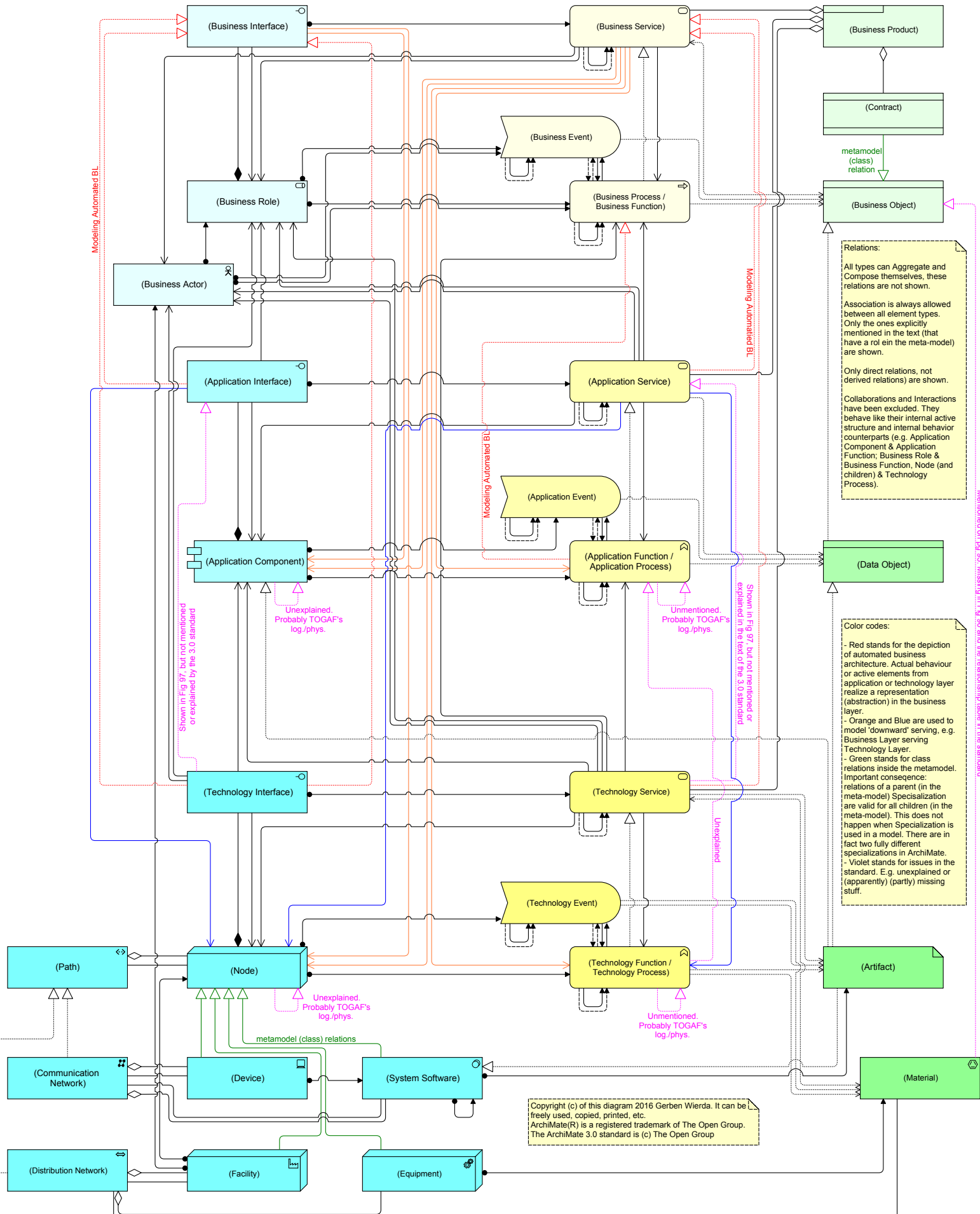


ArchiMate® 3 metamodel – Core

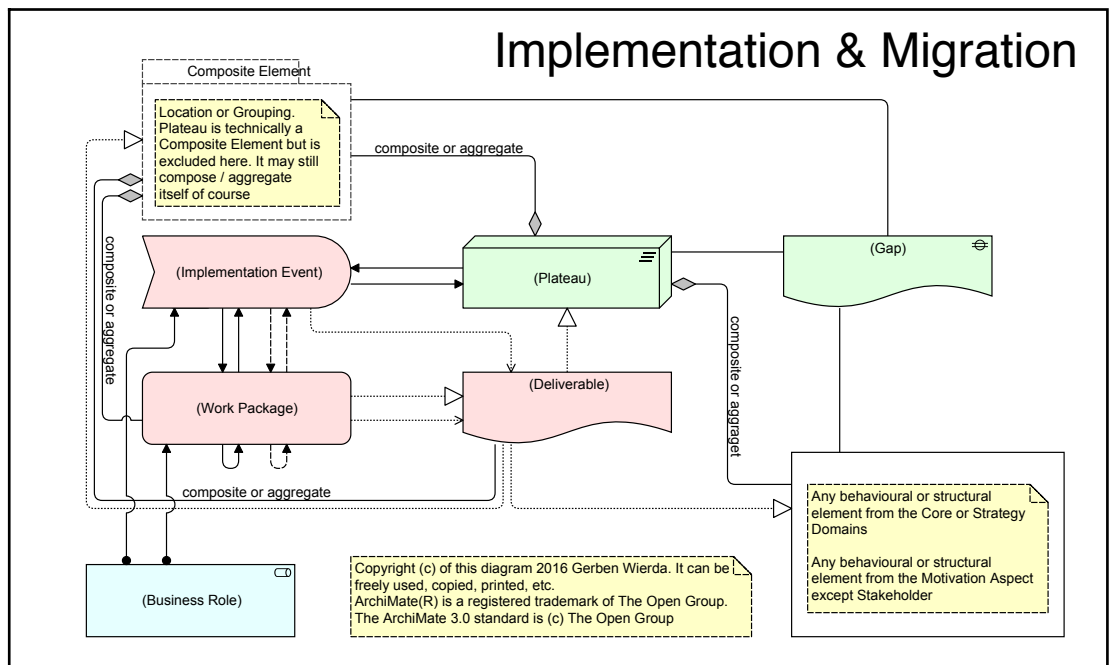
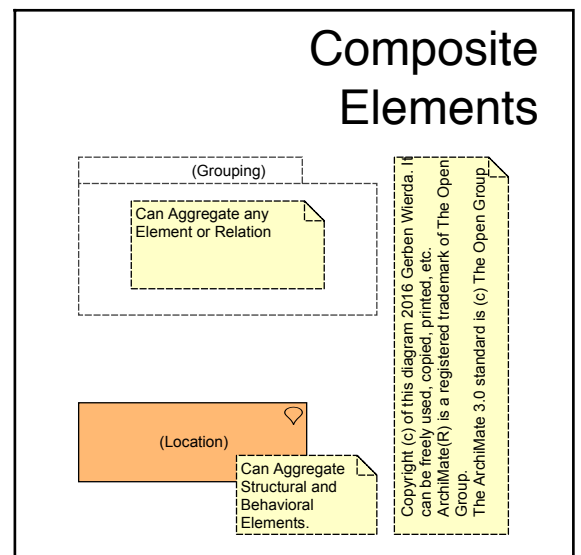
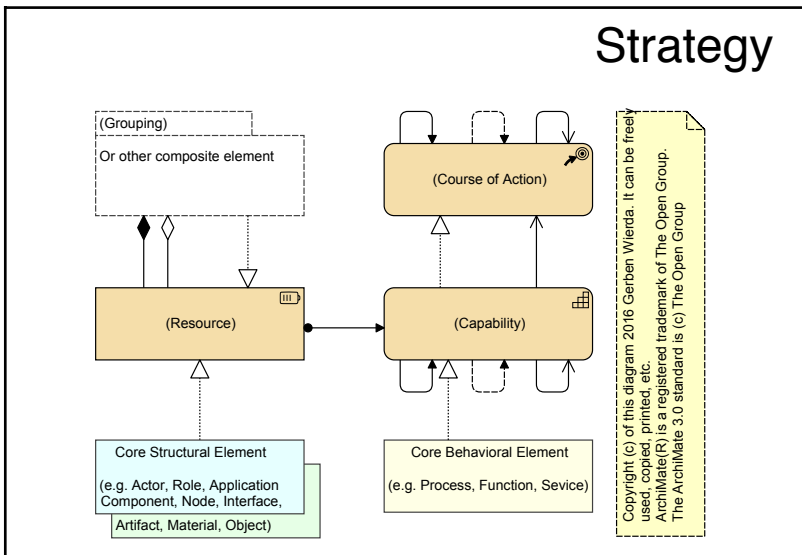
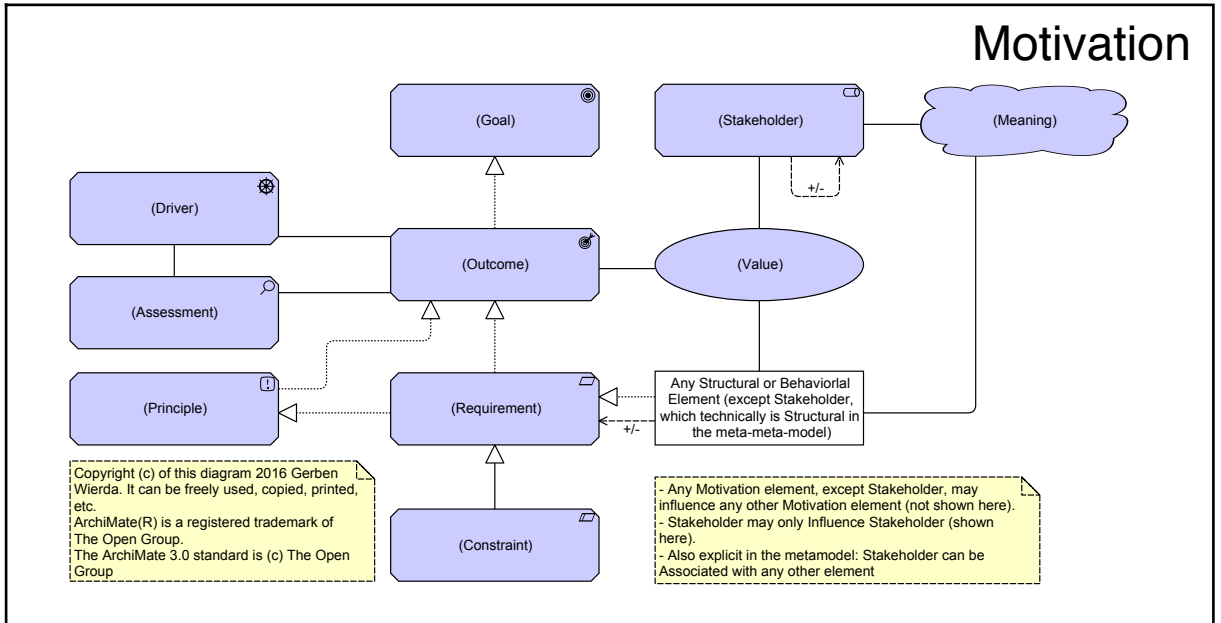
Only direct relations are shown, expanded to show only real meta-model elements
 Uses the Mastering ArchiMate 9-colour scheme, to assist learning and quick reading



Copyright (c) of this diagram 2016 Gerben Wierda. It can be freely used, copied, printed, etc.
 ArchiMate(R) is a registered trademark of The Open Group.
 The ArchiMate 3.0 standard is (c) The Open Group

ArchiMate® 3 metamodel — Non-Core

Only direct relations are shown



See <http://masteringarchimate.com/> for more on ArchiMate
 ArchiMate is a Registered Trademark of The Open Group